

MP Novibra Push-to-Close Latch

Turn-to-open

Features

- The Novibra is designed for hatches, doors, drawers, cockpit lockers, and similar type applications. The Novibra helps eliminate noise in the hatch, doors or drawers caused by engine vibration.
- Fast, easy installation
- Weatherproof face
- Long bolt travel with an adjustable striker plate
- Panel thickness range: 3 - 22 mm (1/8" - 7/8")

Material

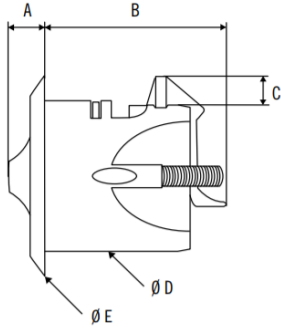
- Available in black, white, chrome, diamond brass, and satin, in any combination of Cup and Handle



Type 1
(For drawers)

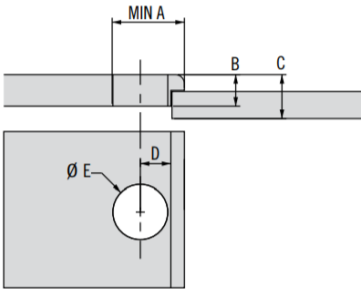


Type 2
(For doors)



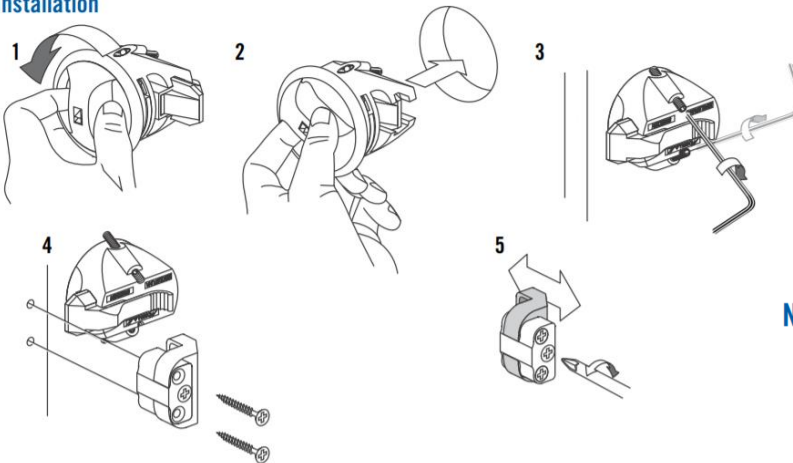
	Imperial		Metric
	Nominal	Decimal	
A	15/32	.472	12
B	1 3/4	1.752	44.5
C	13/32	.406	10
D	1 1/2	1.5	38
E	1 3/4	1.76	44.7

Panel Preparation

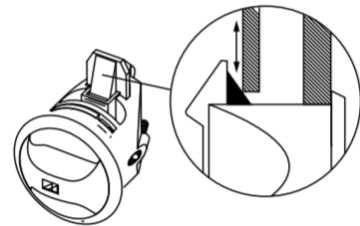


	Imperial		Metric
	Nominal	Decimal	
A	2	2	50
B	min. 1/8 max. 7/8	.118 .875	3 22.5
C	min. 7/8 max. 1 5/16	.875 1.313	23 33
D	1 7/32	1.219	31
E	1 33/64	1.516	38.5

Installation



Non vibration feature



Part Number Selection

T Type
 1 For Drawers
 2 For Doors

C Cup
 1 Chrome
 2 Satin
 3 Brown

B Body
 5 Black
 7 White

H Handle
 1 Chrome
 2 Satin
 3 Brown

4 Diamond Brass
 5 Black
 7 White

MP - 0 T - 103 - B C H

southco®

We are proud to be Southco's
authorized distributor of over 20 years